



RUE

TECHNISCHES BLATT
SCHEMA TECNICA
DATA SHEET
FICHE TECHNIQUE

RUE

DESIGN GAMFRATESI, 2019



Kopfteilstruktur aus dampfgebogenem Buchenholz und Dekoration aus Wiener Geflecht. Zentralelement gepolstert oder aus Wiener Geflecht.

Testiera con struttura in faggio curvato a vapore e decoro in paglia di Vienna. Elemento centrale con imbottitura sfoderabile o in paglia di Vienna.

Headboard with bent beech-wood and woven cane decoration. Upholstered central element with removable cover or in woven cane.

Tête de lit avec structure en hêtre cintré et décor en paille de Vienne. Élément central rembourré déhoussable ou en paille de Vienne.



HBRUEGTES

Dimensions mm.

height 730 | width 2500 | depth 130

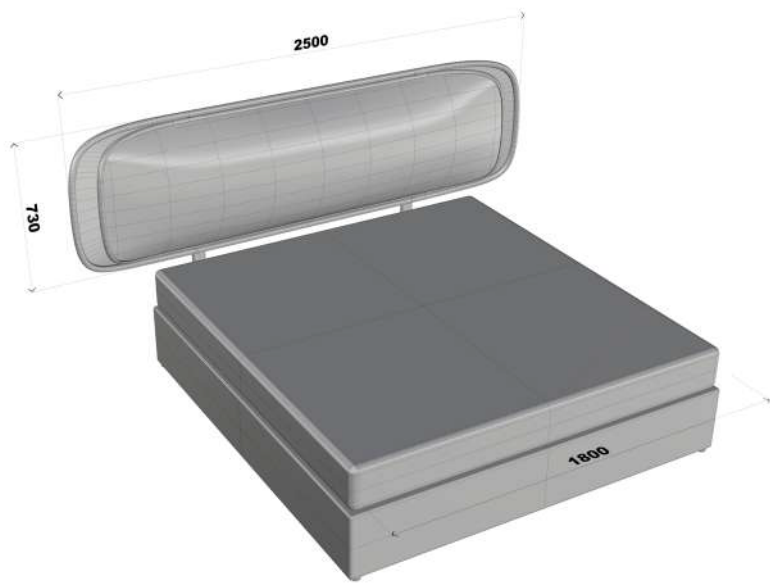
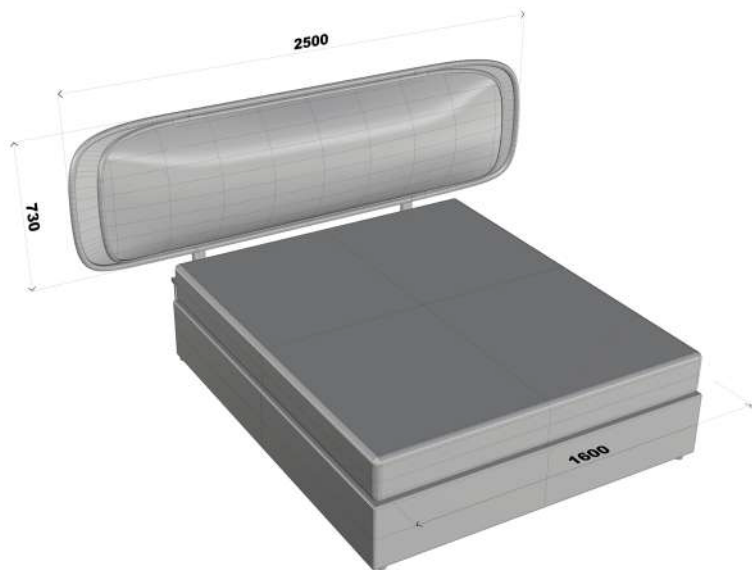


HBRUEGPGL

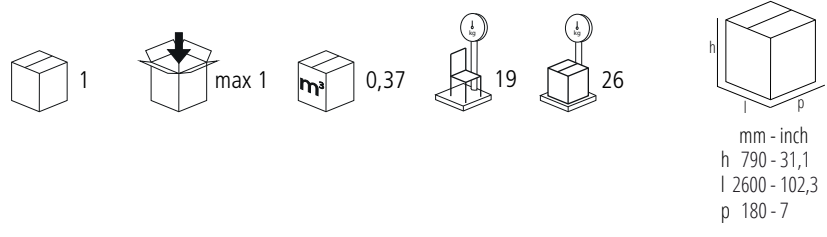
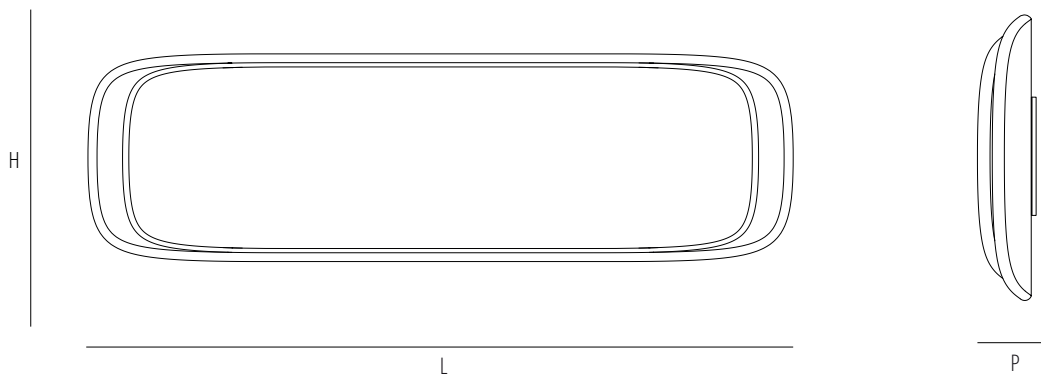
Dimensions mm.

height 730 | width 2500 | depth 130

Aussenmasse
Ingombro
Outer size
Encombremet



	mm	inch
H	730	28,7
L	2500	98,4
P	130	5,1
Hs		
Hb		

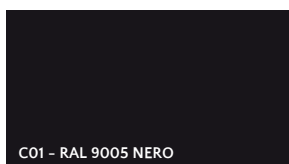


Verfuegbare Ausfuehrungen
Finiture disponibili
Available finishes
Finitions disponibles

WOOD



CLASSIC



CONTEMPORARY



Gebrüder Thonet Vienna GmbH
Prinz Eugen Straße 42
1040 Wien (AT)

www.gebruederthonetvienna.com

Offices of the trademarks' licensee
Production Furniture International S.p.A.
Via Foggia, 23/H
10152 Torino (TO) Italy

Phone: 0039 011 0133330 - info@gebruederthonetvienna.com